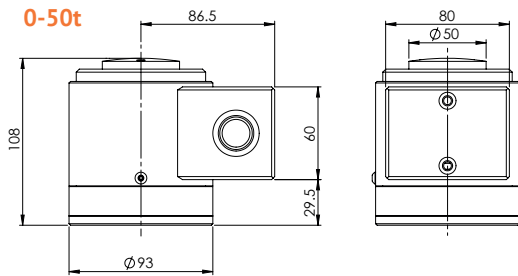


# Wireless Compressive Load Cell

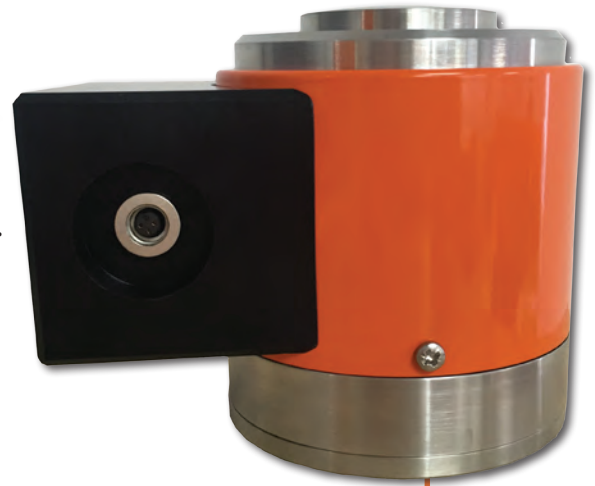
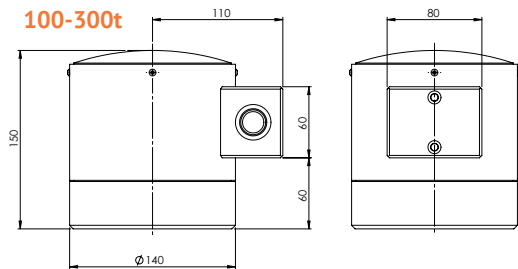
DLM's Wireless Compressive Load Cells can be used independently or in combination as part of weighing platforms. They range from 10t to 300t and manufactured using high grade stainless steel, making these load cells particularly suited to rugged environments and the hire industry amongst others. Other sized compressives can be designed upon request.

## Dimensional Data

### 0-50t



### 100-300t



## Features:

- 2.4GHz license free signal
- Wireless connection with hand held display or custom display
- Compact design

Load Capacity (Tonnes)	Description	Part Number	Accuracy %FRO	Proof Test % Load Capacity	Weight (kg)	Resolution (kg)
10	Dome Saddle	0001 - 1242	<±0.5	150	4.5	10
20	Dome Saddle	0001 - 1243	<±0.5	150	4.5	10
30	Dome Saddle	0001 - 1244	<±0.5	150	4.5	10
50	Dome Saddle	0001 - 1245	<±0.5	150	4.5	10
100	Dome Saddle	0001 - 1246	<±0.5	150	14	100
150	Dome Saddle	0001 - 1247	<±0.5	150	14	100
200	Dome Saddle	0001 - 1248	<±0.5	150	14	100
300	Dome Saddle	0001 - 1249	<±0.5	150	14	100

## Specification

<b>Battery:</b>	2 x 1.25V NiCad or NiMH rechargeable
<b>Battery Life:</b>	700 hours continuous (2 years non operational)
<b>Charger:</b>	Supplied with universal smart charger
<b>Operating Temperature:</b>	-20°C to +60°C
<b>Frequency:</b>	2.4GHz
<b>Range:</b>	Up to 200m line of sight in ambient conditions
<b>Loadcell Material:</b>	Stainless steel
<b>Bridge Resistance:</b>	700Ω
<b>Saddle Options:</b>	Dome saddle / Tilting saddle
<b>Operating Temperature range:</b>	-10°C to +60°C
<b>Compatible With:</b>	Wireless hand held display / Custom built display / Centre of gravity display
<b>Calibration:</b>	Supplied with calibration, proof load and test certificates to BS EN 10002/2 1992
<b>Packaging:</b>	Packaged in rugged storm/peli watertight case.
<b>Optional extras:</b>	100-300t load saddle. Part number 0001-1227