

Standard Load Pin

SLP-2.0

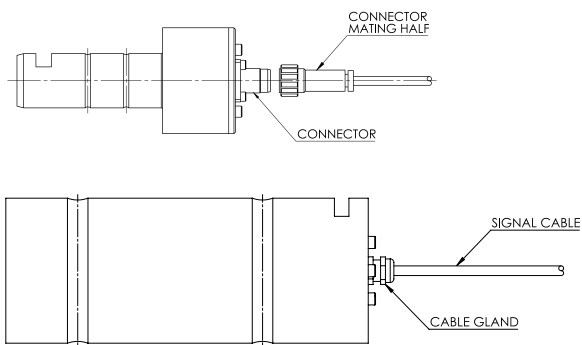
The DLM Standard load pin is manufactured from high tensile 17-4PH H1150D stainless steel fully traceable from European mills. Designed for general use with an emphasis on quality and reliability the Standard Load Pin is suitable for a multitude of industries and applications.

Load pins can also be supplied with various electrical outputs for easy interfacing with a host of different instrumentation and displays, along with o-Ring seals and optional encapsulation against vibration and mechanical shock.

Commodity Code: 90319000



Dimensional Data



Features:

- Stainless steel construction
- Minimum of 5:1 safety factor
- Up to IP68 protection
- Wide range of electrical outputs

Applications:

- Cranes
- Winches
- Instrumented sheave / Snatch blocks
- Cable tensioners
- Custom applications
- Offshore moorings

Specification

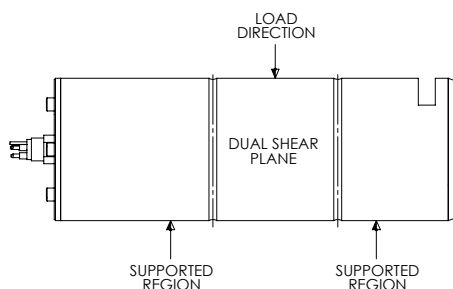
Pin Material:	17/4PH H1150 + 1150 stainless steel
Bridge Resistance:	350Ω - 1000Ω
Accuracy:	<1.0% FS
Load ratings:	1 tonne up to 2000 tonnes
Operating Temperature:	-20°C to +60°C
Signal conditioner options:	mV output / 4-20mA 3 wire amplifier / 4-20mA 2 wire amplifier / RS485 MODBUS signal conditioner / RS485 ASCII signal conditioner / 0-10V Amplifier
Input Voltage:	10V excitation for mV output pin / 12-30VDC for internal amplifiers
Degree of protection:	IP67/IP68 with cable gland connection / IP66 for Mil Spec connector option
Connection options:	Cable gland and signal cable / Mil Spec connector and signal cable
Locking and fixing arrangements:	Keeper slot and lock plate / Anti-rotation bracket / Thread and nut with split pin / Welded bracket
Certification:	Supplied with calibration, proof load and test certificates to BS EN ISO 7500-1:2018 and material certification to 3.1 or 3.2 upon request

* For design options please see design options sheet

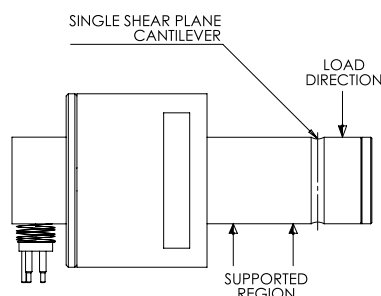
Custom Load Pin Design Options

Custom Load Pin design options

1. Dual shear plane type

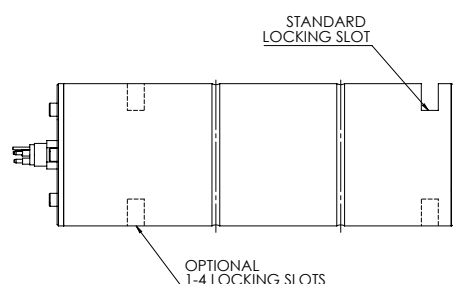


2. Single shear plane cantilever pin

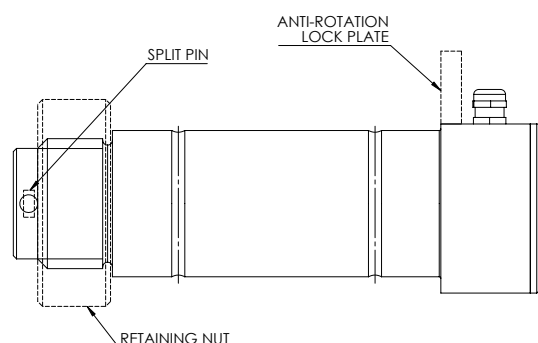


Locking options

1. Lock plate (1 to 4 locking slots)

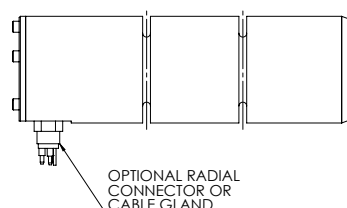


2. Anti-Rotation – thread and nut split pin

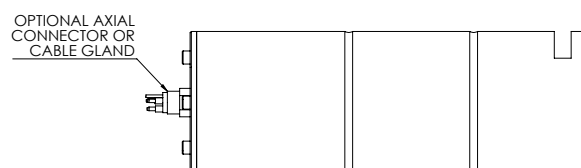


Cable entry options

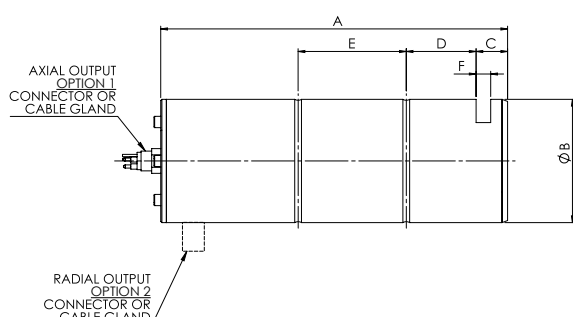
1. Radial – connector or cable gland



2. Axial – connector or cable gland



Dimensional Data



Features:

- Stainless steel construction
- FEA verified designs
- Down hole gauged for high protection
- IP67/IP68 ratings and robust construction
- Removable end caps for easy serviceability and excellent sealing