

Silo Load Cell

SI-1.0

The Silo Load Cell from DLM offers a complete vessel weighing solution incorporating lift off prevention and vessel expansion without compromising accuracy.

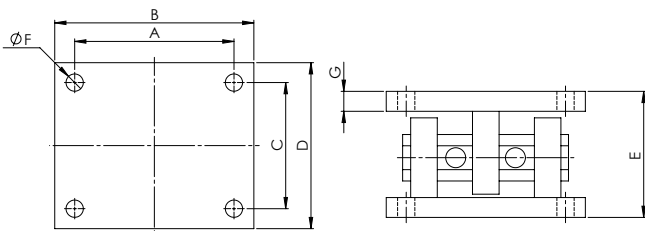
It features a fully welded sensor and is manufactured from high tensile stainless steel type 17-4-PH for endurance durability and corrosion resistance.

The sensor becomes an integral part of your assembly and eliminates the need for vessel restraints or check rods.

We can also offer customised designs suited to your exact specification; as well as a selection of optional accessories including stainless steel brackets and a range of instrumentation.

Silo Systems: Silo load cells can be supplied with full load monitoring systems including panel meter/HMI displays, ticket printers, digital and analogue retransmissions. Systems can be designed to meet clients exacting specifications. Please contact us to discuss your full requirements.

Dimensional Data



| Type | Part Number | Capacity | A | B | C | D | E | ØF | NO.F | C | Min Expansion |
|-------|-------------|----------|-----|-----|-----|-----|-----|----|------|------|---------------|
| Size1 | 0001 - 1087 | 1 – 5t | 105 | 150 | 94 | 124 | 88 | 13 | 8 | 12.7 | 3mm |
| Size2 | 0001 - 1088 | 2 – 20t | 140 | 200 | 125 | 165 | 117 | 18 | 8 | 18 | 4mm |
| Size3 | 0001 - 1089 | 10 – 50t | 175 | 280 | 175 | 230 | 162 | 22 | 8 | 25 | 6mm |
| Size4 | 0001 - 1090 | 75t | 240 | 300 | 190 | 250 | 184 | 26 | 12 | 25 | 6mm |
| Size5 | 0001 - 1091 | 100t | 250 | 320 | 230 | 300 | 210 | 26 | 12 | 30 | 8mm |

Specification

| | |
|-----------------------------------|-------------------------------------------------------|
| Capacities: | 0.5t, 1t, 2t, 5t, 7.5t, 10t, 20t, 30t, 50t, 75t, 100t |
| Full Load Output: | 2.0 mV/V |
| Zero Load Output: | 10V (15V) |
| Accuracy (combined error): | <0.05% |
| Repeatability: | <0.01% |
| Input Resistance: | 750Ω (+/-20) |
| Output Resistance: | 700Ω (+/-2) |
| Compensated Temp. Range: | -10 to +50°C |
| Operating Temp. Range | -25 to +70°C |
| Temp. coefficient on Zero: | <0.005% Capacity/°C |
| Temp. coefficient of Span: | <0.003 Capacity/°C |
| Safe Overload: | 150% of WLL |
| Insulation: | >500MΩ@100Vdc |
| Environmental Protection: | IP68 |



Vessel Weighing Assembly:

- Range 5kN to 1000kN
- Low profile design
- Low deflection
- Atex certification available
- High natural frequency
- Excellent rejection of extraneous forces
- Fatigue rated to 109 full cycles



Available in following finishes for the mounting bracket:

- Standard Zinc Phosphate & Black E-Coat with powder coated Yellow.
- Any Ral colour to be powder coated over the standard finish in replace Yellow.