

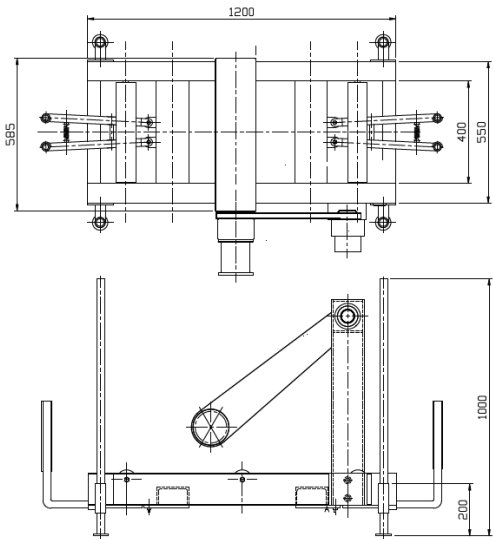
Roller Arm Cable Counter RCC - 2.0

The DLM Roller Arm Cable Counter, is as its name suggests, a widely used and highly effective cable measuring device. Frequently used on cable laying vessels it combines durable, robust design with high reliability.

The counter is fitted with a heavy duty roller arm which supplies data via the sealed rotary quadrature shaft encoder. The counter can be supplied with a DLM pelicase display or as a stand alone unit supplying just the quadrature encoder output for integration into clients existing systems.



Dimensional Data



Features:

- Heavy duty roller arm spanning the width of the frame
- Cable guidance arms
- Adjustable frame height
- Sealed rotary enclosure with IP67 connector
- Supplied with signal cable and displays as required

Applications:

- Cable laying operations
- Cable transfer
- Cable loading
- Cable measurement

Counter Frame Specification

Part number: 0001 - 1239

Frame Height Range:	1 metre
Roller Wheel width:	585mm
Track Width:	400mm
Total Length:	1.2metre
Cable Guidance Arms Max Opening:	420mm
Wheel Distance per Revolution:	0.5 metre
Suitable for Cable Diameters:	17mm to 350mm
Encoder Output:	Push Pull Quadrature

Display Specification

Part number: 0001 - 1228

Enclosure:	Rugged pelicase display or wooden case
Speed/Distance Meter:	Bright red digital LED Red Lion PAXI meter
Exterior Switches:	IP67 rated On/Off switch / IP67 rated reset switch
Re-transmission:	RS232 or RS485
Power Supply:	90-250VAC power supply
Counter Cable Connector:	Cable glands
Counter Accuracy:	1% (assuming clean roller and no cable slip)
Signal Cable:	20 metres as standard