

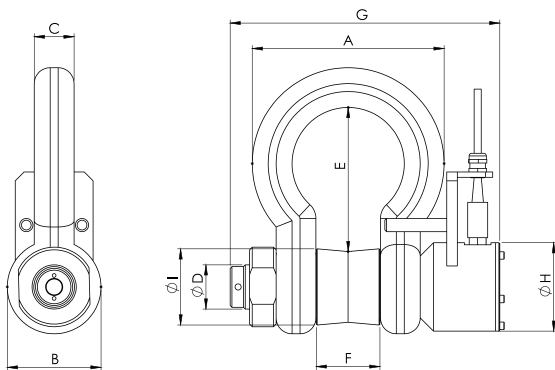
Subsea Shackle Load Cell SUBS-3.0

The Subsea Shackle Load Cell has been designed to measure loads in a subsea environment. DLM's subsea shackles are suited to fit leading industry Crosby and GN shackles.

The Subsea Shackle Load Cell can be used with a TW-3.0-S handheld display, a custom enclosure/display unit or integrated with a client's existing systems. As standard, the Subsea Shackle Load Cell comes with 20m of subsea cable but longer cable options are available.



Dimensional Data



Features:

- Rugged design
- Fitted with internal 4-20mA Amplifier
- Subsea connector and cable
- Designed for standard Crosby and GN Shackle sizes
- Different output available on request

Applications:

- Subsea moorings
- Subsea vehicle towing tension monitoring
- Anchoring tension monitoring
- Cable recovery/repair

Load Capacity (Tonnes)	Part Number	Shackle	A	B	C	ØD	E	F	G	H	ØI	Proof Load Tonnes	Accuracy (% FRO)	Resolution (kg)
12	0001 - 1291	Crosby G2130	146	76	31.8	35	107	51.5	235	100	60	18	<±1	5
25	0001 - 1292	Crosby G2130	225	106	44.5	50	162	73	300	100	86	37.5	<±1	10
55	0001 - 1293	Crosby G2130	327	145	66.5	70	246	105	385	100	114	82.5	<±1	50
85	0001 - 1294	GN H9	365	165	76	82	308	127	444	110	130	127.5	±1	100
120	0001 - 1295	GN H10	416	200	89	95	347	150	493	110	150	180	±1	100
200	0001 - 1296	GN H10	530	260	120	125	450	180	600	140	235	300	±1	100
300	0001 - 1297	GN H10	565	305	130	150	534	200	640	150	287	350	±1	100
400	0001 - 1298	GN H10	655	350	165	175	600	230	720	185	345	600	±1	100
500	0001 - 1299	GN H10	710	370	180	185	610	255	780	200	375	750	±1	100

Specification

Pin, Bobbin & nut material:	17-4PH Stainless steel
Bridge resistance:	350Ω - 1000Ω
Operating temperature:	-20°C to +60°C
Display:	TW3.0-S cabled handheld display / Custom display with internal signal conditioner in Load Cell for increased cable lengths
Cable Length:	20m as standard with TW-3.0-S display / 30m+ with internal signal conditioner
Cable Type:	Subsea rated 4 core twisted pair PU2STP cable with over moulded MCIL-4F
Load Cell Connector:	MCBH-4M
Sealing:	Face and barrel O ring sealed. Pressure tested to 250 Bar
Calibration:	Supplied with calibration, proof load and test certificates to traceable to UKCA BS EN ISO 7500-1 2018
Packaging:	Wooden stowage case for larger capacities
Signal Processor types:	4-20mA Amplifier
Amplifiers Available on Request:	RS485 MODBUS / RS485 ASCII / 0-10V