

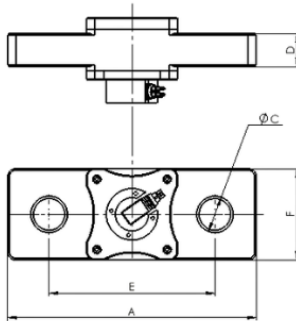
Subsea Tensile Link SUBT-3.0

The Subsea Tensile Link is specially designed for working in subsea conditions and is used for measuring tensile loads. With an optional 4-20mA amplifier the load cell is packaged in a wooden case with a subsea rated signal cable to customer specific lengths or alternatively can be supplied with a TW-3.0-S display.

Fully sealed with a subsea connector and pressure tested to over 250Bar the load cell is the ideal instrument for easily and accurately measuring subsea loads.



Dimensional Data



Features:

- Rugged design
- Designed for standard Shackle sizes
- Subsea connector and cable
- Fitted with internal 4-20mA Amplifier
- **Different outputs available on request**

Applications:

- Subsea moorings
- Subsea vehicle towing tension monitoring
- Anchoring tension monitoring
- Offshore energy R&D

Load Capacity (Tonnes)	Part Number	A	ØC	D	E	F	Accuracy	Proof test (% FRO)	Resolution (% Load Capacity) (Kg)
1	0001 - 1194	215	28	24	145	86.5	±0.2	200	1
2	0001 - 1195	215	28	24	145	86.5	±0.2	200	1
5	0001 - 1196	215	28	28	145	86.5	±0.2	200	2
12	0001 - 1197	240	40	38	150	98	±0.2	200	10
20	0001 - 1198	320	53	48	190	108	±0.2	200	10
25	0001 - 1199	325	53	48	195	120	±0.2	200	10
40	0001 - 1200	410	74	50	242	150	±0.2	150	50
50	0001 - 1201	410	74	58	234	150	±0.2	150	50
100	0001 - 1202	485	99	70	275	180	±0.3	150	100

Specification

Link Material:	17-4PH Stainless steel
Internal Amplifier:	3 wire 4-20mA
Connector:	MCBHRA4M-SS subsea connector
Sealing:	Subsea rated with o ring seals - pressure tested to 250Bar
Operating Temperature:	-10°C to +60°C
Display Unit:	Option 1: Peli Case display with viewing window as per display's datasheet / 5 digit bright led display / on/ off switch tare switch / mains (240vac) Option 2: TW-3.0-S display (part number: 0001-1269)
Calibration:	Supplied with calibration, proof load and test certificates to traceable to UKCA BS EN ISO 7500-1 2018
Packaging:	Packaged in custom built wooden case
Cable:	Subsea moulded cable
Amplifiers available on request:	RS485 ASCII / RS485 MODBUS / 0-10V